

# MONTHLY MEMBERSHIP PROGRESS REPORT

District 11 E2

Results as of: 10/31/2019

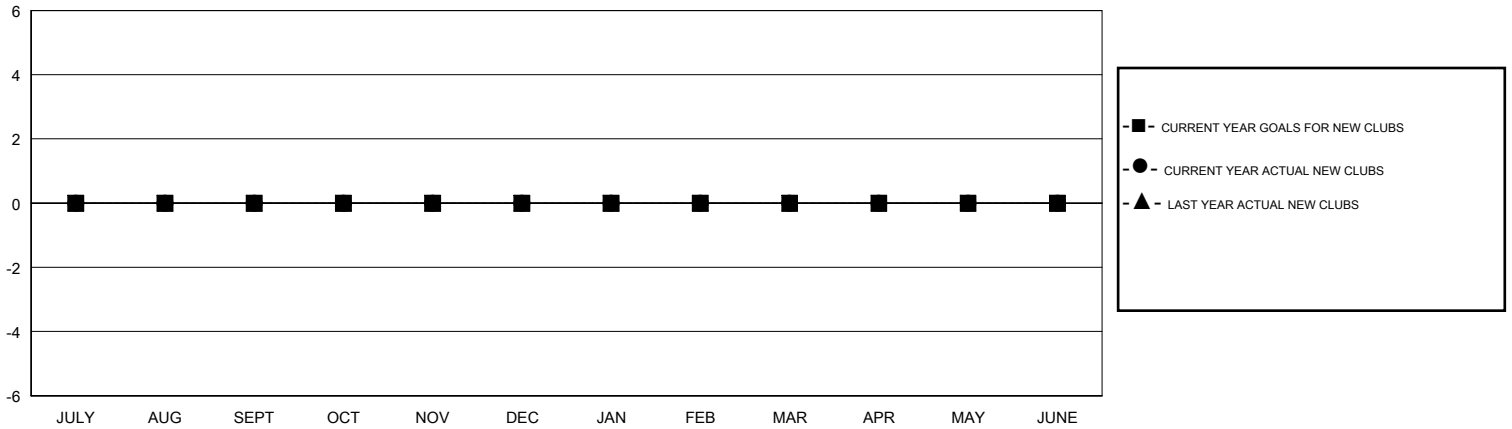
GMT:

LOCATION MICHIGAN

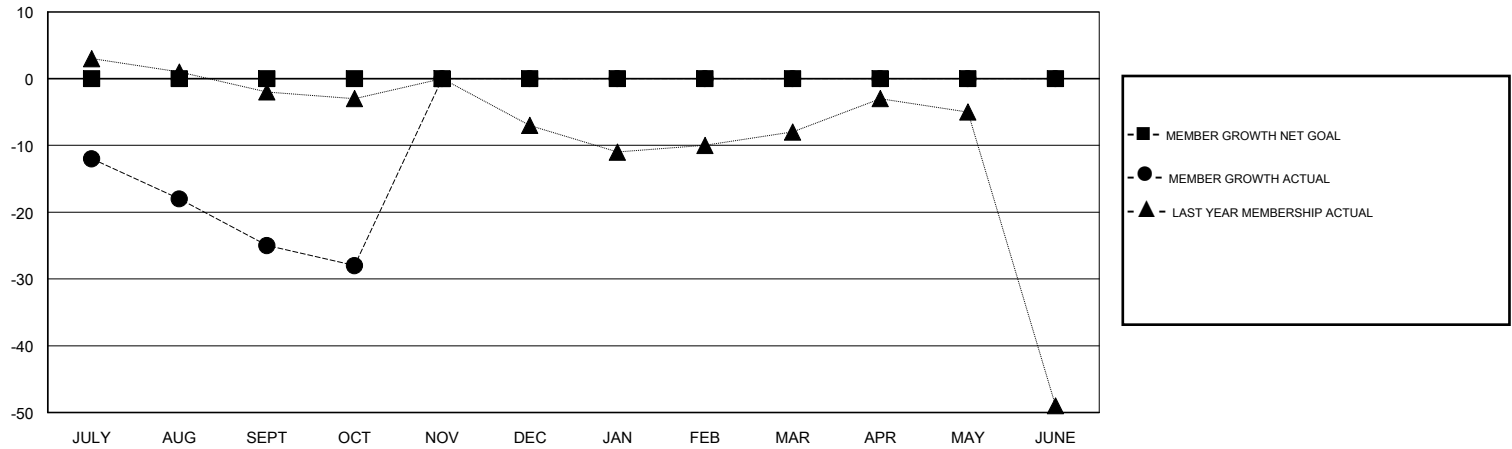
GMT CA

Clubs				Members			
RESULTS FOR 2019-2020				RESULTS FOR 2019-2020			
QUARTER	NEW CLUB GOAL	NEW CLUBS	DROPPED CLUBS	QUARTER	MEMBER GROWTH NET GOAL	MEMBER GROWTH ACTUAL	DROPPED MEMBERS ACTUAL (including transfers)
JULY/AUG/SEPT	0	0	2	JULY/AUG/SEPT	0	6	29
OCT/NOV/DEC	0	0	0	OCT/NOV/DEC	0	5	7
JAN/FEB/MAR	0	0	0	JAN/FEB/MAR	0	0	0
APR/MAY/JUNE	0	0	0	APR/MAY/JUNE	0	0	0

GOALS AND ACTUAL NEW CLUBS CUMULATIVE



GOALS AND ACTUAL MEMBERS CUMULATIVE



DROPPED CLUBS: 2	7 CLUBS OF 32 ADDED 1 OR MORE NEW MEMBERS	<u>GENDER DISTRIBUTION</u>
		MALE 572 (71.68%)
		FEMALE 226 (28.32%)
<u>DROPPED MEMBERS</u>	<a href="#">CLICK HERE FOR CUMULATIVE MEMBERSHIP DATA</a>	TOTAL FAMILY UNIT MEMBERS 101
DECEASED 6		FAMILY MEMBERS PAYING HALF DUES 51
CLUB CANCELLED 0		
OTHER 30		
<b>TOTAL 36</b>		